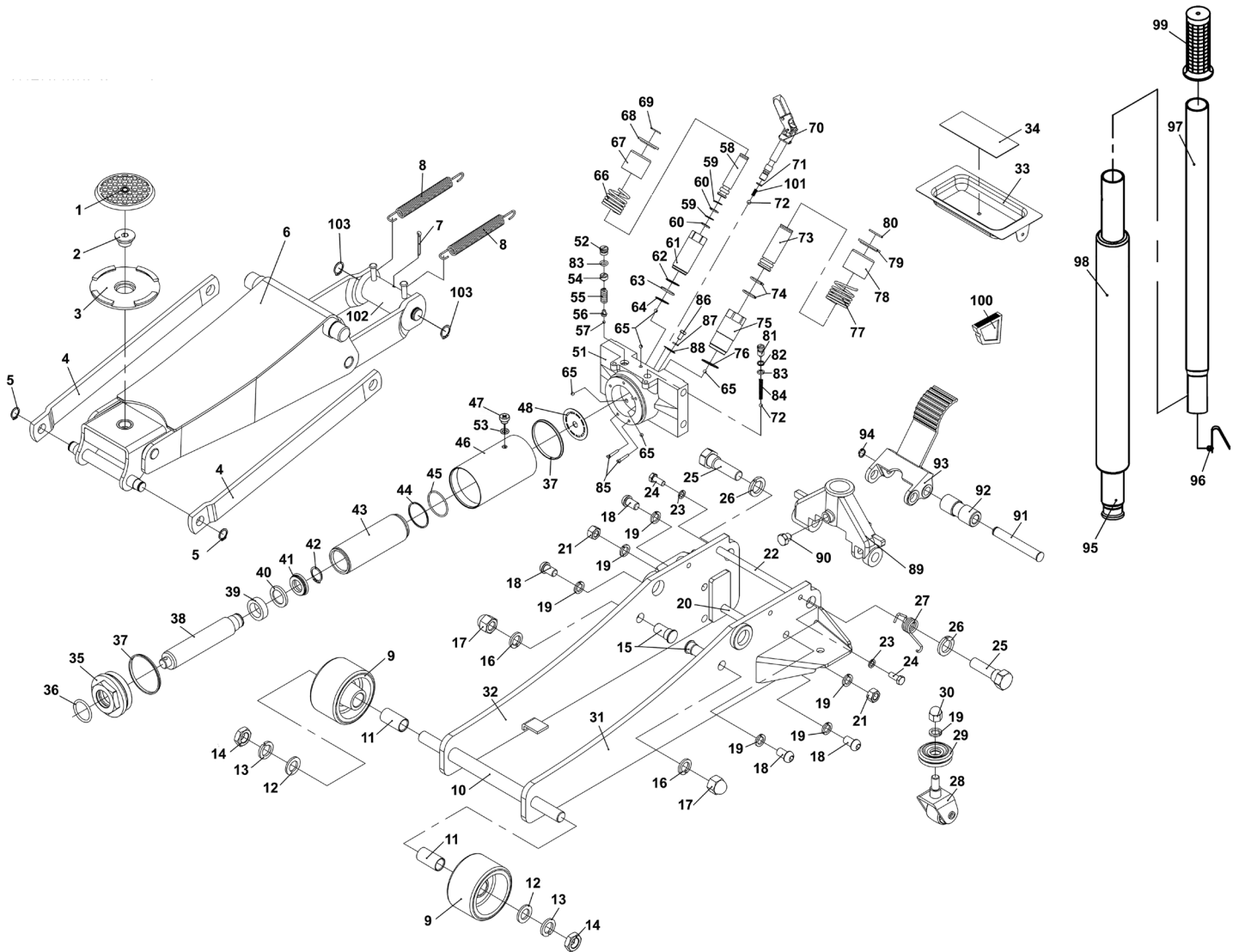




Parts Information:
Viking Professional Trolley Jack 4 Tonne
Low Profile with Rocket Lift
Model No: 4040TB.V2



Item	Part No.	Description	Qty
1	JP17	Safety Rubber Jack Pad - Type B	1
2	4040TB.02	Saddle Bolt	1
3	4040TB.03	Saddle	1
4	4040TB.04	Radius Link	2
5	4040TB.05	Snap Ring 16mm	2
6	4040TB.06	Lift Arm Assembly	1
7	4040TB.07	Cotter Pin	1
8	4040TB.08	Return Spring	2
9	4040TB.09	Front Wheel	2
10	4040TB.10	Front Axle	1
11	4040TB.11	Front Wheel Bush	2
12	FWM18.S	Flat Washer M18 Zinc	2

Item	Part No.	Description	Qty
13	SWM18.S	Spring Washer M18 Zinc	2
14	SN18.S	Steel Nut M18 Zinc	2
15	4040TB.15	Radius Link Stud	2
16	SWM16.S	Spring Washer M16 Zinc	2
17	SN16.SD	Steel Nut M16 Domed Zinc	2
18	BHSS1225.S	Button Head Socket Screw M12 X 25 Zinc	4
19	SWM12.S	Spring Washer M12 Zinc	8
20	4040TB.20	Frame Tie Rod	1
21	NLN12.S	Nyloc Nut M12 Zinc	2
22	4040TB.22	Frame Tie Rod	1
23	SWM8.S	Spring Washer M8 Zinc	2

NOTE: It is our policy to continually improve products and as such we reserve the right to alter data, specifications and component parts without prior notice. There may be alternative versions of this product, please contact us should you require this information.

IMPORTANT: No liability is accepted for incorrect use of product. Spare parts must be fitted by a competent person

WARRANTY: Guarantee is 12 months from purchase date, proof of which will be required for any claim.

Sealey Group, Kempson Way, Suffolk Business Park, Bury St Edmunds, Suffolk. IP32 7AR



01284 757500



sales@sealey.co.uk



www.sealey.co.uk



Parts Information:
**Viking Professional Trolley Jack 4 Tonne
Low Profile with Rocket Lift
Model No: 4040TB.V2**

Item	Part No.	Description	Qty
24	SS820.S	Hex Head Set Screw M8 X 20 Zinc	2
25	4040TB.25	Handle Sleeve Bolt	2
26	SWM20.S	Spring Washer M20 Zinc	2
27	4040TB.27	Torsion Spring	1
28	4040TB.28	Rear Castor Assembly	2
29	4040TB.29	Roller Bearing Assembly	2
30	SN12.SD	Steel Nut M12 Domed Zinc	2
31	4040TB.31	Frame, Left Side	1
32	4040TB.32	Frame, Right Side	1
33	4040TB.33	Tool Tray (c/w Part 34)	1
34	4040TB.34	Rubber Pad (Magnetic)	1
35	4040TB.35	Top Nut	1
36	4040TB.36	O-Ring (Ø34.6 × Ø3.5)	1
37	4040TB.37	Wedge Ring	2
38	4040TB.38	Ram Plunger	1
39	4040TB.39	Bushing Cover	1
40	4040TB.40	Back-up Washer	1
41	4040TB.41	U-Cup Seal	1
42	4040TB.42	Snap Ring 30mm	1
43	4040TB.43	Cylinder	1
44	4040TB.44	Back-up Washer	1
45	4040TB.45	O-Ring (Ø49.5 × Ø2.4)	1
46	4040TB.46	Reservoir	1
47	3001CXP.49	Oil Filler Plug Screw	1
48	4040TB.48	Disc (Ø53 x Ø10x1)	1
51	4040TB.51	Base	1
52	4040TB.52	Guard Screw	1
53	4040TB.53	O-Ring (13x2.4)	1
54	4040TB.54	Safety Valve Screw	1
55	4040TB.55	Safety Valve Spring	1
56	4040TB.56	Ball Seat Valve	1
57	SB-4.0	Steel Ball 4.0mm	1
58	4040TB.58	Pump Piston	1
59	4040TB.59	Back-up Washer	2
60	4040TB.60	O-Ring (Ø10.2 × 2.65)	2
61	4040TB.61	Pump (A)	1
62	4040TB.62	Back-up Washer (for Pump 'A')	1
63	4040TB.63	O-Ring (Ø21.5 × 2.4)	1
64	4040TB.64	Copper Washer (Ø25 × Ø10-0.7)	1
65	SB-5.0	Steel Ball 5.0mm	5

Item	Part No.	Description	Qty
66	4040TB.66	Pump Core Spring (A)	1
67	4040TB.67	Spring Sleeve (A)	1
68	4040TB.68	Spring Stop Plate (A)	1
69	4040TB.69	Spring Stop Plate Ring (A)	1
70	4040TB.70	Release Valve Assembly	1
71	4040TB.71	O-Ring (Ø8×Ø1.8)	1
72	SB-6.0	Steel Ball 6.0mm	2
73	4040TB.73	Pump Piston (B)	1
74	4040TB.74	O-Ring (Ø17.2 × Ø2.65)	2
75	4040TB.75	Pump (B)	1
76	4040TB.76	Copper Washer (Ø28 × Ø14-0.7)	1
77	4040TB.77	Pump Core Spring (B)	1
78	4040TB.78	Spring Sleeve (B)	1
79	4040TB.79	Spring Stop Plate (B)	1
80	4040TB.80	Spring Stop Plate Ring (B)	1
81	4040TB.81	Valve Bolt (M10 x 1-16)	1
82	4040TB.82	Back-up Washer	1
83	4040TB.83	O-Ring (Ø7.7 × Ø1.9)	2
84	4040TB.84	Spring	1
85	4040TB.85	Filter	2
86	SS612.S	Hex Head Set Screw M6 X 12 Zinc	1
87	SWM6.S	Spring Washer M6 Zinc	1
88	4040TB.88	Flat Washer (26 × 17 × T3)	1
89	4040TB.89	Handle Socket	1
90	4040TB.90	Handle Socket Bolt (M12 x 13)	1
91	4040TB.91	Handle Socket Pin	1
92	4040TB.92	Handle Socket Roller	1
93	4040TB.93	Foot Pedal	1
94	4040TB.94	External Circlip 14.0mm ID.	1
95	4040TB.95	Lower Handle (c/w Part 98)	1
96	2001LERE.V2-92	Handle Lock Button	1
97	4040TB.97	Upper Handle (c/w Part 99)	1
98	4040TB.98	Handle Sleeve	1
99	4040TB.99	Handle Grip	1
100	4040TB.100	Handle Locking Block	1
101	SQ0344	Release Valve Spring	1
102	SQ0422	Lifting Arm Rod	1
103	3000CXD.V6-07	Snap Ring 19mm	2
--	4040TB.HU	Hydraulic Unit for 4040TB (not shown)	1
--	4040TB.RK	Repair Kit for 4040TB (not shown)	1

NOTE: It is our policy to continually improve products and as such we reserve the right to alter data, specifications and component parts without prior notice. There may be alternative versions of this product, please contact us should you require this information.

IMPORTANT: No liability is accepted for incorrect use of product. Spare parts must be fitted by a competent person

WARRANTY: Guarantee is 12 months from purchase date, proof of which will be required for any claim.

Sealey Group, Kempson Way, Suffolk Business Park, Bury St Edmunds, Suffolk. IP32 7AR



01284 757500



sales@sealey.co.uk



www.sealey.co.uk